

SORENTO

LARGE 7-SEATER SUV





DESIGN EXCELLENCE IN EVERY DETAIL

WHERE ART MEETS SCIENCE

Athletic and dynamic, the 2021 Kia Sorento rewrites SUV style. Built on an all-new platform, Sorento immediately grabs you with its elongated, sculpted silhouette and purposeful stance. This latest interpretation of the iconic "Kia Tiger Nose grille" is easily the most incisive and purposeful ever.

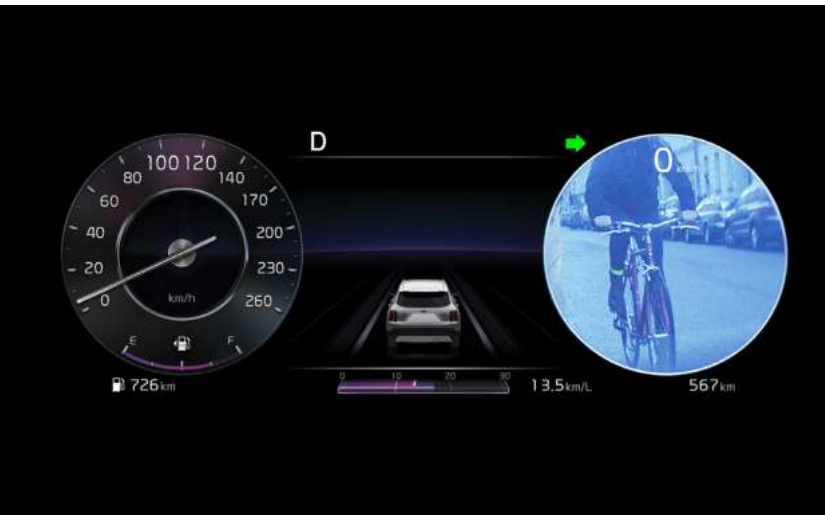


SORENTO SOLVES AN AGE-OLD PROBLEM

GEAR CHANGING THAT'S LIFE CHANGING

In a segment first, the 2021 Sorento introduces a wet double-clutch 8-speed automatic transmission, combining the smoothness of a traditional hydraulic automatic with the responsiveness and fuel efficiency of a dual clutch system. Whether you are cruising the highway, negotiating rush hour traffic or in the twisty backroads, your Sorento will be as easy going and relaxed or responsive and nimble as you want it to be.

As a further vote of confidence, rated towing capacity has been increased by a massive 25%, together with the addition of the all-new Terrain selector, which sorts out the traction and ride on the least forgiving of surfaces.

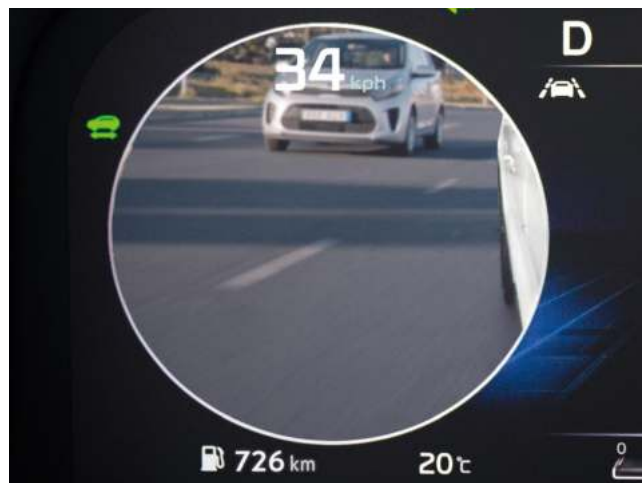


GREATER STRENGTH, HEIGHTENED SAFETY

AN UNCOMPROMISING APPROACH TO KEEPING YOUR FAMILY SAFE

For all its elegance and style, Sorento is also a vehicle of real substance. Additional built-in passive strength is further enhanced by some of the most advanced active safety technology available today.

There is an all-new Multi-Collision Brake auto braking system, designed to work with Forward Collision Avoidance Assist. Blind Spot Collision Avoidance, Rear Cross Traffic Collision Avoidance and Lane Keep Assist all combine to reduce the chance of a collision, but in that unlikely event, seven airbags will protect you and your family.



The innovative Blind Spot View Monitor (BVM) display in your dashboard gauge cluster shows you a live camera view of your rear blind spots. Parking sensors and the rear-view camera are complemented with a 360° around-view monitor, making you aware of unsuspecting pedestrians, young children or pets that may wander near your vehicle.

Young family members are further protected by five anchorage points for child restraints, speed sensing auto lock and a power child safety lock, as well as rear occupant alert meaning no-one gets left behind.

Also new for 2021 is Remote Smart Parking Assist (RSPA). Operated from the key fob, RSPA autonomously controls steering and vehicle movement, enabling Sorento to enter or exit a parking space on its own. Available on Premium model only, operating conditions apply.

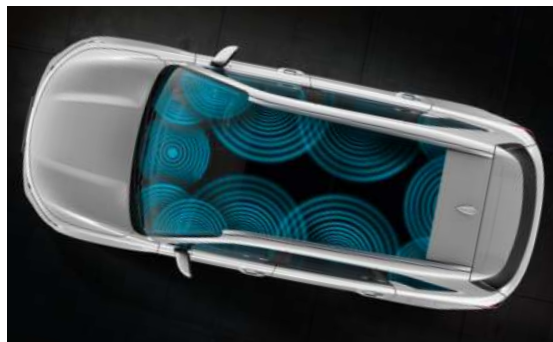
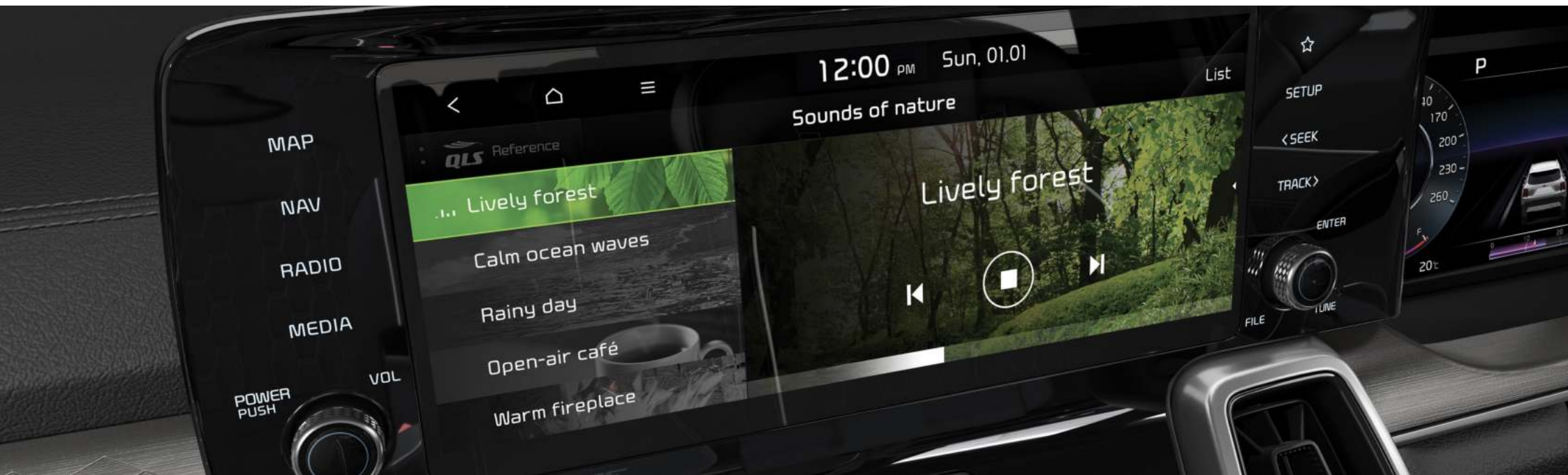


TECHNOLOGY BUILT FOR SIMPLICITY

INTELLIGENT INTERACTIVITY

As vehicles evolve, they incorporate more and more technology. For Kia, this doesn't mean introducing technology for its own sake, everything must have a purpose and enhance the driving or passenger experience.

The new Sorento incorporates the very latest advances in connectivity and infotainment, enhanced by superior ergonomics and a more intuitive user experience. This is technology that anticipates and responds, that seems to think like you do.



**PERSONALISED DISPLAY
LETS YOU DRIVE YOUR WAY**

A 10.25" LCD infotainment touchscreen and 12.3" LCD supervision dashboard screen share the info-metric duties. On Deluxe models and up there are no analogue dials to be seen, everything is digital, and what is displayed can be tailored to your preferences from a multitude of options. Apple CarPlay™ and Android Auto™ are both supported.

Bluetooth smartphone pairing is available for multiple phones at the same time, along with a wireless smartphone charger hidden in the centre console and up to eight USB sockets.

An 8.5" wide customisable Head Up Display (HUD) is also standard fitment on models EX and above.

High quality audio systems are standard on Sorento. Deluxe and Premium models feature the new 12 speaker BOSE™ Premium sound, a true reference quality audio system.



VERSATILITY THAT CREATES EXTRA COMFORT

SORENTO IS READY FOR YOUR LIFESTYLE

Whether you want to accommodate a big family or lots of weekend adventure gear, Sorento's wider, longer, three-row cabin is more than up to the task. Welcoming and luxurious on one hand, it is also highly functional, from the Dual Zone Automatic Climate Control to the multiple storage cubbies.

The seven seats can be configured in so many ways, with all of them folding at the touch of a button. The class leading cargo space and extra headroom swallow up surf boards, fishing gear, golf clubs and everything else for a great getaway.

BODY COLOURS



MINERAL BLUE

The pearlescent finish adds depth and interest to this evocative blue. This is an expressive colour that reflects this vehicle's elite status in the large SUV realm.



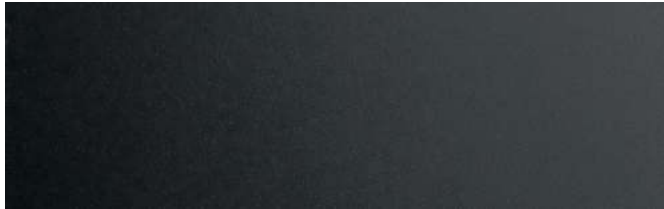
SNOW WHITE PEARL

A bright, crisp white, the pearlescent finish accentuates the vehicle's sharp creases and subtle curves. Creates a dramatic contrast with darker interiors.



PLATINUM GRAPHITE

The darker of our two greys, Platinum Graphite is the colour of the moment, attracting admiring and envious glances wherever your journey takes you.



AURORA BLACK

The light and movement in the pearlescent finish bring energy and life to this gorgeous black. Aurora Black Pearl is pure class, perfect for this class-leading vehicle.



RUNWAY RED

This will be the choice of those who love the sporty look, a red that says purposeful and powerful in a way that's not overstated or brash.



STEEL GREY

The lighter of our two greys, Steel Grey is a subtle, stylish, timeless hue that makes a quiet but assured and confident statement on the road.

WHEELS



17" Alloy
LX



18" Alloy
EX



19" Alloy
Deluxe



20" Alloy
Premium

SPECIFICATIONS

SORENTO 2021

| | LX | EX | Deluxe | Premium |
|--|------------|---|------------------------------|------------|
| MECHANICAL | | | | |
| Engine | | R2.2L DOHC CRDi Turbo Diesel | | |
| Displacement (cc) | | 2,151 | | |
| Compression Ratio | | 16.0 : 1 | | |
| Max. power (kW @ rpm) | | 148 @ 3,800 | | |
| Max. torque (Nm @ rpm) | | 440 @ 1,750 – 2,750 | | |
| Fuel consumption ADR (L/100km) – Combined* | | 6.1 | | |
| CO2 emission (g/km) – Combined* | | 159 | | |
| TRANSMISSION | | | | |
| Gearbox | | 8 speed Dual Clutch Transmission (Wet-type) | | |
| Shift Controller Type | | Conventional Gear Knob | E-Shift Dial (Shift-By-Wire) | |
| Drivetrain | | Active AWD (Part-time with lock mode), Torque distribution display | | |
| Drivemode system (4 modes – Comfort, Eco, Sport, Smart) | ● | ● | ● | ● |
| Terrain mode system (3 modes – Snow, Mud, Sand) | ● | ● | ● | ● |
| SUSPENSION | | | | |
| Front Suspension | | McPherson Strut | | |
| Rear Suspension | | Multi-link | | |
| WHEELS & TYRES | | | | |
| Tyres/Wheels | 235/65 R17 | 235/60 R18 | 235/55 R19 | 255/45 R20 |
| Wheels Size/Type | 17" Alloy | 18" Alloy | 19" Alloy | 20" Alloy |
| Tyre Pressure Monitoring System (TPMS) | ● | ● | ● | ● |
| Spare Wheel Type | | Full Size Alloy | | |
| Braking System | | 325mm Ventilated Front and Rear Discs with ABS, ESC, HAC, DBC, TSA, MCB | | |
| Electronic Parking Brake with Auto Hold | ● | ● | ● | ● |
| STEERING | | | | |
| Steering System | | Rack-mounted Motor Driven Power Steering (R-MDPS) | | |
| Minimum Turning Radius | | 5.8m | | |
| Steering Wheel Adjustment | | Tilt and telescopic | | |
| SAFETY FEATURES* | | | | |
| Forward Collision Avoidance Assist (FCA) – Car/Pedestrian/Cyclist/Junction | ● | ● | ● | ● |
| Vehicle Stability Management (VSM) | ● | ● | ● | ● |
| Emergency Stop Signal (ESS) | ● | ● | ● | ● |
| Multi Collision Brake (MCB) | ● | ● | ● | ● |
| Blind Spot Collision Avoidance Assist (BCA) | ● | ● | ● | ● |

SAFETY FEATURES - CONTINUED

| | LX | EX | Deluxe | Premium |
|--|----|----|--------|-------------------------------|
| Rear Cross Traffic Collision Avoidance Assist (RCCA) | ● | ● | ● | ● |
| Lane Keep Assist System (LKAS) - Line/Road Edge | ● | ● | ● | ● |
| Lane Follow Assist (LFA) | ● | ● | ● | ● |
| Blind Spot View Monitor (BVM) | - | - | ● | ● |
| Parking Collision Avoidance Assist - Reverse (PCA) | - | - | - | ● |
| Driver Attention Alert (DAA+) | ● | ● | ● | ● |
| Trailer Stability Assist (TSA) | ● | ● | ● | ● |
| Hill Start Assist Control (HAC) | ● | ● | ● | ● |
| Downhill Brake Control (DBC) | ● | ● | ● | ● |
| Smart High Beam Assist (HBA) | ● | ● | ● | ● |
| Dual Front and Side Airbags | ● | ● | ● | ● |
| Dual Side Curtain Airbags (1st and 2nd row) | ● | ● | ● | ● |
| Front Centre Side Airbag | ● | ● | ● | ● |
| Front Seat Pretensions/Load Limiters | ● | ● | ● | ● |
| 3-Point ELR Seatbelts on all seats | ● | ● | ● | ● |
| Seatbelt Reminders for all seats | ● | ● | ● | ● |
| Child restraint anchorage points (5 x Top tether / 4 x ISOFIX) | ● | ● | ● | ● |
| Rear Occupant Alert | - | - | ● | ● |
| Speed Sensing Auto Door Lock | ● | ● | ● | ● |
| Impact Sensing Auto Door Unlock | ● | ● | ● | ● |
| Child Safety Rear Door Locks | ● | ● | ● | ● |
| Power Child Safety Lock (Auto) | - | - | - | ● |
| Engine Immobiliser | ● | ● | ● | ● |
| Parking Sensors (Front and Rear) | ● | ● | ● | ● |
| Rearview Camera with Dynamic Guidelines | | | | Rear View Monitor with Switch |
| Around View Monitor with Dynamic Guidelines | - | - | ● | ● |

EXTERIOR FEATURES

| | | | | |
|---|---------|---|--------------------|---|
| LED front headlights (MFR Type) | ● | ● | ● | - |
| Dual LED front headlights (Projection Type) | - | - | - | ● |
| Panoramic Power Sunroof | - | - | - | ● |
| LED Rear Combination Lights | - | - | ● | ● |
| LED Daytime Running Lights | ● | ● | ● | ● |
| LED Front & Rear Fog Lights | ● | ● | ● | ● |
| LED High Mounted Stop Light | ● | ● | ● | ● |
| Roof Rails | ● | ● | ● | ● |
| Electrically adjustable outside mirror | Folding | | Heated and Folding | |
| Outside mirror with LED side indicators | ● | ● | ● | ● |
| Satin Chrome coloured Door Handles | ● | ● | ● | ● |
| Front and Rear Mudguards | ● | ● | ● | ● |
| Silver Painted Skid Plate (Front and Rear) | ● | ● | ● | ● |
| Acoustic Film (Windshield) | ● | ● | ● | ● |
| Solar Glass (Windshield & Front Door) | - | ● | ● | ● |

EXTERIOR FEATURES - CONTINUED

| | LX | EX | Deluxe | Premium |
|---|----|----|--------|---------|
| Privacy Glass (Rear windows & tailgate) | - | ● | ● | ● |
| Aero Blade Front Wipers | - | ● | ● | ● |
| Rear wiper (Hidden type) | ● | ● | ● | ● |

INTERIOR FEATURES

| | | | 7 seats | |
|---|-------|-------------|------------|------------------|
| | Cloth | | Leather*** | Nappa Leather*** |
| Seating configuration | | | | |
| Interior Seat Trim | | | | |
| Composite Leather Steering Wheel and Gearshift Knob | ● | ● | ● | ● |
| Heated Steering Wheel | - | ● | ● | ● |
| Paddle Shifters | - | - | ● | ● |
| 6-way driver's seat incl. height adjust (pumping device) | ● | - | - | - |
| 10-way power driver's seat (incl. 2-way lumbar support) | - | ● | ● | - |
| 14-way power driver's seat (incl. 4-way lumbar support and cushion extension) | - | - | - | ● |
| Memory Driver's Seat (2 settings) | - | - | - | ● |
| 10-way power front passenger's seat (incl. 2-way lumbar support and walk-in switch) | - | - | - | ● |
| 2nd row sliding walk-in device (left hand side) | ● | ● | ● | ● |
| Sliding & reclining 2nd row seats (60:40) | ● | ● | ● | ● |
| One-touch remote folding 2nd row seat (60:40) | ● | ● | ● | ● |
| 2nd row centre armrest | ● | ● | ● | ● |
| Split fold flat 2nd row seats (60:40) | ● | ● | ● | ● |
| Split fold flat 3rd row seats (50:50) | ● | ● | ● | ● |
| Headrests with height adjust & tilt function (Front seats) | ● | ● | ● | ● |
| Height adjustable headrests (all seats) | ● | ● | ● | ● |
| Height adjustable front seatbelts | ● | ● | ● | ● |
| 3-stage Heated Front Seats | - | ● | ● | ● |
| 2-stage Heated Rear Seats (2nd row outer seats) | - | - | - | ● |
| 3-stage Ventilated Front Seats | - | - | - | ● |
| Interior lights (front & rear) | ● | ● | ● | - |
| LED interior lights (front & rear) | - | - | - | ● |
| Cloth A/B Pillar Cover | - | - | ● | ● |
| Alloy Pedals | - | - | ● | ● |
| Inside Door Handle | | Metal Paint | | ION Plating |
| Interior Mood Lighting | - | - | ● | ● |
| Black High Gloss interior Trim | - | - | ● | ● |
| Luggage Screen | ● | ● | ● | ● |
| Luggage Net Hook | ● | ● | ● | ● |

COMFORT & CONVENIENCE

| | | | | |
|--|---|---|---|---|
| DAB+ Digital Radio with MP3 Compatible Audio Player | ● | ● | ● | ● |
| 8" Colour LCD Touchscreen | ● | - | - | - |
| 10.25" Colour LCD Touchscreen with Split Screen Function | - | ● | ● | ● |
| Satellite Navigation + Live Traffic Update | - | ● | ● | ● |
| 6 Speaker Audio System | ● | ● | - | - |

COMFORT & CONVENIENCE - CONTINUED

| | LX | EX | Deluxe | Premium |
|---|--------------|----|-------------|---------|
| BOSE® Premium Sound System with 12 Speakers | - | - | ● | ● |
| Android Auto™ & Apple Carplay™∞ | ● | ● | ● | ● |
| 4.2" Colour TFT Supervision instrument cluster | ● | ● | - | - |
| 12.3" Colour TFT LCD Supervision cluster | - | - | ● | ● |
| Bluetooth® Multi-connection functionality (phone/media stream) ⁹ | ● | ● | ● | ● |
| Shark Fin Antenna | ● | ● | ● | ● |
| 2 x 12 volt power outlets (1 x behind centre console & 1 x cargo area) | ● | ● | ● | ● |
| 3 x USB chargers (2 x front console & 1 x behind centre console) | ● | ● | ● | ● |
| 2 x USB chargers (On Driver & Front Passenger Seat Back) | - | ● | ● | ● |
| 2 x USB chargers (cargo area) | - | - | ● | ● |
| Wireless phone charging (Qi) | - | - | ● | ● |
| Steering Wheel Mounted Audio & Cruise Controls | ● | ● | ● | ● |
| Advanced Smart Cruise Control (ASCC) | ● | ● | ● | ● |
| 3rd Row Air Conditioning | - | ● | ● | ● |
| 2nd & 3rd Row Heating Duct | ● | ● | ● | ● |
| Remote Central Locking | ● | ● | ● | ● |
| Power Windows (Front & Rear) | ● | ● | ● | ● |
| Auto Up/Down Safety Window | Drivers Only | | All Windows | |
| Dual Zone Automatic Climate Control | ● | ● | ● | ● |
| Auto Window Defog System | ● | ● | ● | ● |
| Auto Welcome Lights | ● | ● | ● | ● |
| Auto Light Control | ● | ● | ● | ● |
| Electrochromic Rear View Mirror | ● | ● | ● | ● |
| Low Washer Fluid Warning | ● | ● | ● | ● |
| Smart Proximity Key with Engine Start/Stop Button and Remote Engine Start | ● | ● | ● | ● |
| Smart key with RSPA (Remote Smart Parking Assist) | - | - | - | ● |
| Head-up display (Windshield-type) | - | ● | ● | ● |
| Sun shade blinds (2nd row) | - | - | ● | ● |
| Smart Power Tailgate (Height Adjustable) | - | - | ● | ● |
| Sun Visors with Illuminated Vanity Mirrors | ● | ● | ● | ● |
| Rain Sensing Front Wipers | ● | ● | ● | ● |

DIMENSIONS

| | |
|---|-------------------------|
| Overall Length (mm) | 4,810 |
| Overall Width (mm) | 1,900 |
| Overall Height (mm) | 1,700 (with roof rails) |
| Wheelbase (mm) | 2,815 |
| Minimum Ground Clearance (mm) | 176 |
| Tare weight (kg) | 1,908 |
| Cargo Capacity - 1st/2nd/3rd row (L, VDA) | 2,011 / 616 / 187 |
| Fuel tank capacity (L) | 67 |
| Towing Capacity - braked/unbraked (kg) | 2,500 (TBC) / 750 |
| Max. towball download (kg) | 100 |

* Fuel consumption figures shown are from standard Australian Design Rules tests (ADR 81/02). Actual results achieved will differ according to operating conditions and driving style.

** Safety technologies are supplemental systems and do not replace the need for the driver to exercise care and attention.

*** Leather appointed seats may comprise of genuine leather, and other man-made leather-like materials or a combination thereof.

∞ Apple CarPlay™ requires an iPhone 5 or later. It is recommended to always update your iPhone to the latest iOS release. Use the Apple Lightning® cable provided with your phone, or an Apple-certified Lightning cable.

∞ Android Auto™ requires an Android phone with Android 5.0 Lollipop or higher. It is recommended to always update your phone to the latest OS release. Use the USB cable provided with your phone.

§ Not all mobile phones will be compatible with the vehicle's Bluetooth® system.

Specifications apply to 2021 (MY21) Sorento. Kia Motors New Zealand Limited reserves the right to discontinue or change the models, features, specifications, options, designs and prices of products referred to in this brochure without incurring any liability whatsoever to any purchaser or prospective purchaser of any such products.



ECO-CONSCIOUS

SO YOU VALUE SUSTAINABLE LIVING? WE DO TOO.

That's why we take pride in rising to meet the expectations and challenged of the 21st century while making tangible contributions to the preservation of the environment and sustainable development of society.

Our environmental research centre spearheads our drive for the production of clean hybrid and fuel-cell vehicles to lead the way to eco-friendly cars for a greener tomorrow for you, your children and all of us.

From design through to recycling, we create innovative products, adhering to state-of-the-art Design for Recycling (DfR) guidelines. Even at the end of your car's life, we aim for eco-friendly return and treatment.

Operating a rigid process, we guarantee environmental protection in the treatment of harmful waste substances. These are then recycled or recovered, ensuring the highest level of environment protection.

As you can see, what you do on a small scale with your household refuse, we at Kia Motors do on a large scale.



All new Kia Passenger Vehicles come with an impressive 5-Year/100,000 km (whichever comes first) Warranty Programme covering against manufacturing or assembly defects. This warranty programme is transferable between owners and emphasises our commitment to our customers.



The 2021 Kia Sorento now comes with 3 years or up to 100,000km's scheduled servicing (whichever occurs first).

This servicing plan (in conjunction with Kia's 5 year/100,000 kms warranty) together form the Kia NZ Drive Further scheme allowing you peace of mind motoring.

Offer is not available to lease companies, rental, government purchases or on demonstrator units.



A Roadside Assistance Programme for the duration of the Warranty Period is also offered on every new Kia at no cost. In the unlikely event that your Kia has broken down, help is only a call away and trained staff will be despatched to your location. If a repair cannot be conducted on the spot, the vehicle will be towed free of charge to the nearest Kia dealer.



If you and your new Kia were unfortunately involved in an incident or crash that requires body repairs to your Kia, Kia Incident Care is here to help you, and is free for the first five years.

S O R E N T O

