

2022

Kia Niro

HEV | PHEV | EV



Life is what you make it

At Kia, we believe movement inspires ideas. Great ideas come to you when you're on the move. Whether you're walking, traveling on a train or driving.

It's why we create the spaces and the time you need to bring ideas to life. Very like the experience that awaits you behind the wheel of every Kia. With our design, space innovation, purpose driven technology and built in sustainability, we aim to inspire every time you encounter the Kia brand.

Because you never know where your next big idea awaits. But they are out there. Waiting to be discovered. So, what are you waiting for? Get moving. Get inspired.



All roads lead to electric

If your quest for a cleaner environment goes hand in hand with a passion for stylish driving, here is your answer. Or three answers to be precise.

The new Kia Niro range features a stunning crossover design, bristles with inspiring technology, and offers plenty of passenger and cargo space. Comprising the range are the Niro Hybrid (HEV), Niro Plug-in Hybrid (PHEV) and zero-emission Niro EV.

Whether your electric journey starts here, or it continues, Kia Niro offers versatility, fun and eco-friendly motoring at its exciting best.

A choice of eco-conscious options

Hybrid (HEV)

The Niro Hybrid is for drivers who want to do their bit for the environment, but don't want to compromise on power or range. A silky combination of 32kW electric motor and 1.6 litre GDi petrol engine delivers extra power when you need it, while significantly reducing fuel consumption and costs.

Niro's sophisticated parallel drive system enables both units to deliver maximum power at the same time. The battery recharges itself when the vehicle is cruising, or in town traffic when the revs are kept in check.

Plug-in Hybrid (PHEV)

The Niro PHEV offers you the ultimate hybrid pairing, for even cleaner, reduced emission driving. Emissions drop to 30% of those of the HEV, an exceptionally fuel-efficient hybrid in its own right.

The plug-in 44.5kW electric motor also greatly reduces your fuel use, with petrol consumption dropping to as few as 1.3 litres per 100kms. Once again, the parallel drive system is the hero, utilising the electric motor to maximum advantage.

Electric (EV)

The range topping, fully electric Niro EV excites with an emission-free drive that is powerful, assured and seemingly effortless. Lower end torque is introduced gradually, while 3-step regenerative braking keeps you in full control.

The fast-charging lithium polymer battery sits neatly below the floor of the spacious cabin, increasing both rear-seat leg room and cargo space.

The Niro EV offers an all-electric range of 455 kilometres.





Green meets style

Low emissions are only part of Niro's environmental story. This Niro is sleeker and more aerodynamic: the lower wind resistance means less power is needed to reach and maintain speed. This squeezes valuable extra kilometres out of the battery charge or fuel tank.

The chassis, drivetrain, exhaust and tyres have also been designed to create as little drag as possible, substantially reducing fuel and/or battery use. What's more, the eco-friendly tyres last longer, keeping down running costs too.

Drive Mode Select lets you choose from four settings, ECO+, ECO, Normal and the more dynamic Sport, which adjust the vehicle's performance and energy consumption.

For all its eco credentials, Niro remains one of the most eye-catching compact SUVs on the road. The details tell the story, from the purposeful, aerodynamic curve of the roof rails to the machine-finished alloy wheels.



A cabin that's as clever as it is comfortable

The interior is spacious with all the head, shoulder and leg room you could ask for. Get in, stretch out, relax, in supportive seats that keep you comfortable, even on long journeys.

Designed for a truly upscale ambience, the materials used throughout are refined and pleasing to touch. Ambient lighting on the dashboard sets the mood, while dual zone air-conditioning sets the temperature.

In Premium models the front seats are heated and ventilated. These even cool down automatically if the temperature reaches an unsafe level. Drivers get a power memory seat, while privacy glass features in the rear.



Overseas model shown. JBL Premium Sound System available on Premium model.



Touch screen technology goes to a new level

Multi-taskers, this tech is for you. Niro's 10.25-inch infotainment touchscreen lets you access three different applications simultaneously, for instance, rear view monitor, navigation and media. You'll also love the shortcuts below the screen that take you directly to the information you want.

Behind the wheel you'll find a sophisticated new 7-inch supervision cluster featuring a digital speedometer and unique visuals. The screen can be customised to show the important information you want to see while you're behind the wheel.

Other standout features in the technology package include wireless charging of a compatible smartphone, using the wireless charging pad at the front of the central console. Also, you have a smart key, that lets you lock or unlock the vehicle at the touch of a button, even when you're some distance from the vehicle.



Overseas model shown.



Safely to the end of every journey

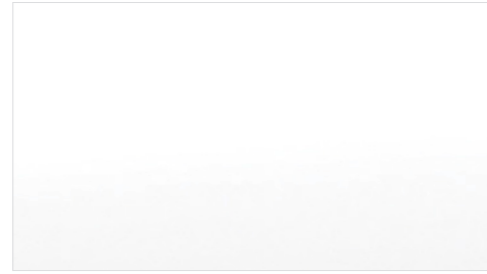
Kia Niro combines advanced driving assists and warning alerts to keep you and your family safe everywhere the journey takes you.

Rear Cross Traffic Alert warns you of anything moving behind you when reversing while front and rear parking sensors help you enter and exit end-on-end parks without mishap. Blind Spot Detection, Lane Keep Assist and Forward Collision Warning System will not only alert you to potential danger, the last two will even control of the vehicle if necessary to minimise damage.

Electronic Stability Control, ABS Brakes with EBD and Downhill Brake Control all help keep things steady at speed, while High Beam Assist comes into its own on the open road at night.

Hill Start Assist makes take-off from slopes straightforward, and the reversing camera with dynamic guidelines makes easy work of negotiating narrow driveways. Your tyre pressure is monitored and if it drops significantly, your Niro will let you know.

Body colours



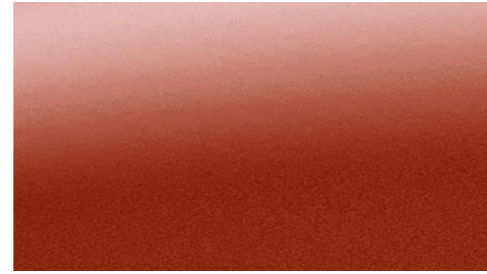
Snow White Pearl



Steel Grey



Interstellar Grey



Orange Delight



Temptation Red



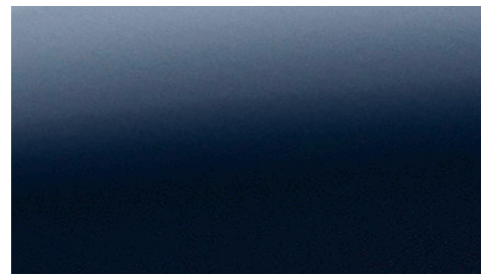
Runway Red



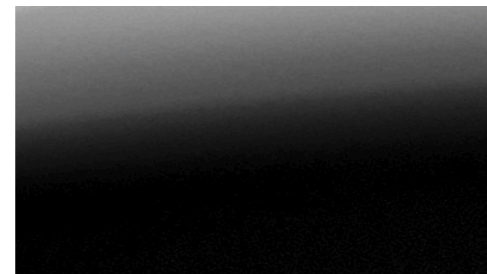
Deep Cerulean Blue



Yacht Blue



Gravity Blue



Aurora Black Pearl

Wheels



16" WHEELS
(Available on HEV LX & LX Plus models, and all PHEV models)



17" WHEELS
(Available on EV models only)



18" WHEELS
(Available on HEV Deluxe & Premium models only)

SPECIFICATIONS

2022 NIRO HEV & PHEV

	HYBRID				PLUG-IN HYBRID			
	LX	LX PLUS	DELUXE	PREMIUM	LX	LX PLUS	DELUXE	PREMIUM
ENGINE								
Engine Type					1.6L GDI Petrol			
Displacement					1,580 cc			
Compression Ratio					13.0 : 1			
Maximum Power - Engine only					77 kW @ 5,700 rpm			
Maximum Torque - Engine only					147 Nm @ 4,000 rpm			
HYBRID SYSTEM								
Hybrid Type	Parallel (Transmission Mounted Electric Device)							
Electric Motor Type	Permanent Magnet Synchronous Motor							
Fuel Economy - Combined cycle*	3.8 L / 100km	4.4 L / 100km		1.3 L / 100km				
CO ₂ Emissions - Combined cycle*	88 g / km	101 g / km		29 g / km				
Maximum Power - Electric motor only	32 kW		44.5 kW					
Maximum Torque - Electric motor only	170 Nm		170 Nm					
Battery Type	Lithium-ion Polymer							
Battery Voltage	240 V		360 V					
Battery Capacity	6.5 Ah		24.7 Ah					
Battery Energy	1.56 kWh		8.9 kWh					
Maximum Range in EV mode**	-		Up to 58km					
Maximum Power - Combined					104 kW @ 5,700 rpm			
Maximum Torque - Combined					265 Nm @ 4,000 rpm			
CHARGING								
Charging Cable Type	-		1) Type 2 'Mennekes' charging cable with in cable control box (ICCB) with Type 1 plug for standard NZ 3-pin household socket 2) Type 2 to Type 2 'Mennekes' AC charging cable					
TRANSMISSION								
Gearbox	6-Speed Dual Clutch Transmission							
Drivetrain	Front Wheel Drive							
SUSPENSION								
Front Suspension	McPherson Strut							
Rear Suspension	Multi-Link							
WHEELS & TYRES								
Tyres / Wheels	205 / 60 R16	225 / 45 R18		205 / 60 R16				
Spare Wheel Type	Temporary (Steel)		Temporary Mobility Kit					

	HYBRID				PLUG-IN HYBRID			
	LX	LX PLUS	DELUXE	PREMIUM	LX	LX PLUS	DELUXE	PREMIUM
STEERING								
Steering System	Motor Driven Power Steering							
Minimum Turning Radius	5.3 m							
Steering Wheel Adjustment	Tilt & Telescopic							
Drive Mode Select - Eco / Sport	●	●	●	●	●	●	●	●
BRAKES								
Braking System	280mm Ventilated Front discs, 284mm Solid Rear Discs							
Regenerative Braking	●	●	●	●	●	●	●	●
Paddle Shifters - Eco & Sport Modes	●	●	●	●	●	●	●	●
Electronic Parking Brake with Auto Hold	●	●	●	●	●	●	●	●
SAFETY FEATURES**								
Safety Rating	5 Star ANCAP (2016 Standard)							
Forward Collision Avoidance Assist (FCA) - Car / Pedestrian / Cyclist	●	●	●	●	●	●	●	●
Lane Keep Assist System (LKAS) - Line / Road Edge	●	●	●	●	●	●	●	●
Driver Attention Alert	●	●	●	●	●	●	●	●
Lane Follow Assist System (LFAS)	●	●	●	●	●	●	●	●
Blind Spot Collision Warning (BSW)	-	●	●	●	-	●	●	●
Rear Cross Traffic Alert (RCTA)	-	●	●	●	-	●	●	●
Smart Cruise Control (SCC) with Stop & Go	●	●	●	●	●	●	●	●
Tyre Pressure Monitoring System (TPMS)	●	●	●	●	●	●	●	●
ABS Brakes with EBD & BA	●	●	●	●	●	●	●	●
Hill-Start Assist Control (HAC)	●	●	●	●	●	●	●	●
Electronic Stability Control (ESC)	●	●	●	●	●	●	●	●
Vehicle Stability Management (VSM)	●	●	●	●	●	●	●	●
Dual Front & Side Airbags	●	●	●	●	●	●	●	●
Dual Side Curtain Airbags	●	●	●	●	●	●	●	●
Driver's Knee Airbag	●	●	●	●	●	●	●	●
Front Seatbelt Pretensioners / Load Limiters	●	●	●	●	●	●	●	●
3 Point ELR Seatbelts (All Seats)	●	●	●	●	●	●	●	●
Seatbelt Reminders (All Seats)	●	●	●	●	●	●	●	●
Rear Seat Occupant Alert	●	●	●	●	●	●	●	●
Manual Speed Limit Assist	●	●	●	●	●	●	●	●
2 x ISOFIX Child Seat Anchor Points - Rear Seat	●	●	●	●	●	●	●	●
Manual Child Safety Door Locks	●	●	●	●	●	●	●	●
Impact Sensing Door Unlock	●	●	●	●	●	●	●	●
Remote Keyless Entry	●	●	●	●	●	●	●	●
Engine Immobiliser	●	●	●	●	●	●	●	●

	HYBRID				PLUG-IN HYBRID			
	LX	LX PLUS	DELUXE	PREMIUM	LX	LX PLUS	DELUXE	PREMIUM
SAFETY FEATURES** CONTINUED								
Rear Parking Sensors	●	●	●	●	●	●	●	●
Front Parking Sensors	-	-	●	●	-	-	●	●
Rear View Monitor with Dynamic Guidelines	●	●	●	●	●	●	●	●
EXTERIOR FEATURES								
Halogen Bi-Function Projection Headlights	●	●	●	-	●	●	●	-
LED Bi-Function Projection Headlights	-	-	-	●	-	-	-	●
LED Daytime Running Lights	●	●	●	●	●	●	●	●
Auto Light Control	●	●	●	●	●	●	●	●
Front Fog Lights	Halogen		LED		Halogen		LED	
Side Mirrors	Electrically adjustable, heated and folding with LED side indicators							
LED Rear Combination Lamps	●	●	●	●	●	●	●	●
Rear Spoiler with LED High-Mounted Brake Light	●	●	●	●	●	●	●	●
Roof Rails	●	●	●	●	●	●	●	●
Black & Chrome Coating Radiator Grille	●	●	●	●	●	●	●	●
Outside Door Handle - Chrome Coating	-	-	●	●	-	-	●	●
Waistline - Chrome Coating	-	-	-	-	●	●	●	●
Front & Rear Silver Painted Skid Plate	●	●	●	●	●	●	●	●
Solar Windshield & Front Door Glass	●	●	●	●	●	●	●	●
Privacy Glass - Rear & Back Windows	-	●	●	●	-	●	●	●
Aeroblade Wipers	●	●	●	●	●	●	●	●
INTERIOR FEATURES								
Seating Configuration	5 seats							
Interior Seat Trim**	Cloth	Composite Leather		Leather	Cloth	Composite Leather		Leather
Driver & Passenger's Seat Height Adjuster	●	●	●	●	●	●	●	●
Driver's Power Adjustable Seat with 2-Way Power Lumbar Support	-	-	●	Memory	-	-	●	Memory
Heated Front Seats (3-Stage)	-	●	●	●	-	●	●	●
Ventilated Front Seats	-	-	-	●	-	-	-	●
Height Adjustable Headrests with Driver & Passenger Up / Down & Sliding	●	●	●	●	●	●	●	●
Leather Steering Wheel & Gear Shift Knob***	●	●	●	●	●	●	●	●
Steering Wheel Paddle Shifters	●	●	●	●	●	●	●	●
Heated Steering Wheel	-	-	-	●	-	-	-	●
Aluminium Sports Pedals	-	-	-	●	-	-	-	●
Inside Door Handle	Metal Paint		Chrome Coating		Metal Paint		Chrome Coating	
60:40 Split Folding Rear Seat	●	●	●	●	●	●	●	●
Rear Centre Armrest with Cupholder	●	●	●	●	●	●	●	●
Front Passenger's Side Seat Back Pocket	●	●	●	●	●	●	●	●

	HYBRID				PLUG-IN HYBRID			
	LX	LX PLUS	DELUXE	PREMIUM	LX	LX PLUS	DELUXE	PREMIUM
INTERIOR FEATURES CONTINUED								
Driver's Side Seat Back Pocket	-	-	-	●	-	-	-	●
Front Overhead Console Lamp with Sunglasses Case	●	●	●	●	●	●	●	●
Centre Console Storage Box	●	●	●	●	●	●	●	●
Deluxe Door Scuff	-	-	-	●	-	-	-	●
High Glossy Centre Facia	-	-	●	●	-	-	●	●
Luggage Screen	●	●	●	●	●	●	●	●
Under Floor Box Storage	-	-	-	-	●	●	●	●
COMFORT & CONVENIENCE FEATURES								
8" Colour Touchscreen Infotainment	●	-	-	-	●	-	-	-
10.25" Colour LCD Touchscreen Infotainment	-	●	●	●	-	●	●	●
Satellite Navigation	-	●	●	●	-	●	●	●
6 Speaker Sound System	●	●	●	-	●	●	●	-
8 Speakers JBL® Premium Sound System	-	-	-	●	-	-	-	●
Apple CarPlay™ °	●	●	●	●	●	●	●	●
Android Auto™ °	●	●	●	●	●	●	●	●
USB Input with Multimedia Connectivity∞	●	●	●	●	●	●	●	●
USB Charging Ports	-	-	1x Front Console & 1x Inside Centre Console					
Bluetooth® Connectivity with Voice Recognition∞	●	●	●	●	●	●	●	●
7" TFT LCD Colour Supervision Instrument Cluster	●	●	●	●	●	●	●	●
Multifunction Trip Computer	●	●	●	●	●	●	●	●
2 x 12V Power Outlets - Front Console	●	●	●	●	●	●	●	●
Wireless Phone Charger	-	-	●	●	-	-	●	●
Steering Wheel Mounted Controls	●	●	●	●	●	●	●	●
Air Conditioning	Dual Zone Climate Control with Driver only mode							
Auto Window Defogger	●	●	●	●	●	●	●	●
Air Vents on Rear Centre Console	-	-	●	●	-	-	●	●
Rear Seat Heating Duct	●	●	●	●	●	●	●	●
Electrochromic Rear View Mirror (ECM)	-	●	●	●	-	●	●	●
Power Windows Front & Rear	●	●	●	●	●	●	●	●
Auto Up / Down & Safety Window	Driver only		Driver & Front Passenger		Driver only		Driver & Front Passenger	
Remote Central Locking	●	●	●	●	●	●	●	●
Rain Sensing Front Wipers	-	●	●	●	-	●	●	●
Low Washer Fluid Warning	●	●	●	●	●	●	●	●
Smart Key with Engine Start / Stop Button	-	●	●	●	-	●	●	●
Sunvisors with Illuminated Vanity Mirrors	●	●	●	●	●	●	●	●
Luggage Screen	●	●	●	●	●	●	●	●

	LX	HYBRID LX PLUS	DELUXE	PREMIUM	LX	PLUG-IN HYBRID LX PLUS	DELUXE	PREMIUM
COMFORT & CONVENIENCE FEATURES CONTINUED								
Hood Insulator	●	●	●	●	●	●	●	●
DIMENSIONS								
Overall Length					4,355 mm			
Overall Width					1,805 mm			
Overall Height					1,545 mm (incl. roof rails)			
Wheelbase					2,700 mm			
Minimum Ground Clearance					160 mm			
WEIGHT & CAPACITIES								
Kerb Weight - Minimum / Maximum	1,425 kg / 1,512 kg			1,519 kg / 1,576 kg				
Luggage Capacity - Rear Seats Up / Down (VDA)	410 L / 1,408 L			324 L / 1,322 L				
Maximum Towing Capacity - Braked / Unbraked****				1,300 kg / 600 kg				
Maximum Towball Download				100 kg				
Fuel Tank Capacity	45 L			43 L				

Information contained herein is for comparative purposes only. Specifications are correct at time of printing, and may vary to the above at any given time.

* Fuel consumption figures are stated for the purpose of comparison. Actual results achieved will differ according to operating conditions and driving style.

** Safety technologies are supplemental systems and do not replace the need for the driver to exercise care and attention.

*** Leather seats and other fixtures may comprise of genuine leather, and man-made leather-like materials or a combination thereof.

∞ Not all smartphones / devices may be compatible.

° Apple CarPlay™ requires an iPhone 5 or later. It is recommended to always update your iPhone to the latest iOS release. Use the Apple Lightning cable provided with your phone, or an Apple-certified Lightning cable. Kia cannot guarantee continued compatibility.

° Android Auto™ requires an Android phone with Android 5.0 Lollipop or higher. It is recommended to always update your phone to the latest OS release. Use the USB cable provided with your phone. Kia cannot guarantee continued compatibility.

∞ Not all mobile phones will be compatible with the vehicle's Bluetooth® and multimedia system. Kia cannot guarantee continued compatibility.

**** Towing should only be done in HEV mode on PHEV models

Specifications apply to 2022 (MY22) Niro models. Kia New Zealand Limited reserves the right to discontinue or change the models, features, specifications, options, designs and prices of products referred to in this brochure without incurring any liability whatsoever to any purchaser or prospective purchaser of any such products.

SPECIFICATIONS

2022 NIRO EV

	EX	EV SX	PREMIUM
MODEL			
Electric Motor Type	Permanent Magnet Synchronous Motor		
Maximum Power	150 kW @ 3,800 - 8,000 rpm		
Maximum Torque	395 Nm @ 0 - 3,600 rpm		
CO ₂ Emissions	0g / km		
TRANSMISSION			
Gearbox	Single-speed Reduction Gear		
Final Gear Ratio - Constant	8.206 : 1		
RECOMMENDED RANGE			
Maximum Range	455 km*		
Maximum Speed	167 km/h		
0-100 km/h	7.8 sec		
ON BOARD CHARGER			
Maximum Power	7.2 kW		11 kW
Battery Heating System	-	-	●
CHARGING TIME[°]			
AC Charge with ICCB up to 100% (230V / 12A)			29 hours
AC Charge up to 100% (7.2kW Charger)	9 hours 35 minutes		-
AC Charge up to 100% (11kW Charger)	-		7 hours
DC fast charge up to 80% (50kW charger)			75 minutes
DC fast charge up to 80% (100kW charger)			54 minutes
CHARGING			
Charging Cable Type	1) Type 2 'Mennekes' charging cable within cable control box (ICCB) with Type 1 plug for standard NZ 3-pin household socket 2) Type 2 to Type 2 'Mennekes' AC charging cable		
SUSPENSION			
Front Suspension	McPherson Strut		
Rear Suspension	Multi-Link		
WHEELS & TYRES			
Tyres / Wheels	215 / 55 R17		
Wheel Size / Type	17" Alloy		
Spare Wheel Type	Temporary Mobility Kit		
BRAKES			
Braking System	16" Ventilated Front Discs, 16" Solid Rear Discs		
Electric Parking Brake	●	●	●

	EX	EV SX	PREMIUM
STEERING			
Steering System		Motor Driven Power Steering	
Minimum Turning Radius		5.3 m	
Steering Wheel Adjustment		Tilt & Telescopic	
Drive Mode Select - Eco / Sport	●	●	●
SAFETY FEATURES**			
Forward Collision Avoidance Assist (FCA) - Car / Pedestrian / Cyclist	●	●	●
Lane Keep Assist System (LKAS) - Line / Road Edge	●	●	●
Driver Attention Alert	●	●	●
Lane Follow Assist System (LFAS)	●	●	●
Blind Spot Collision Warning (BSW)	●	●	●
Rear Cross Traffic Alert (RCTA)	●	●	●
Smart Cruise Control (SCC) with Stop & Go	●	●	●
Tyre Pressure Monitoring System (TPMS)	●	●	●
Manual Speed Limit Assist	●	●	●
ABS Brakes with EBD & BA	●	●	●
Electronic Park Brake with Auto Hold	●	●	●
Hill-Start Assist Control (HAC)	●	●	●
Electronic Stability Control (ESC)	●	●	●
Vehicle Stability Management (VSM)	●	●	●
Dual Front and Side Airbags	●	●	●
Dual Side Curtain Airbags	●	●	●
Driver's Knee Airbag	●	●	●
Front Seatbelt Pretensioners / Load Limiters	●	●	●
3 Point ELR Seatbelts (All Seats)	●	●	●
Rear Seat Occupant Alert	●	●	●
Seatbelt Reminders (All Seats)	●	●	●
2 x ISOFIX Child Seat Anchor Points - Rear Seat	●	●	●
Manual Child Safety Door Locks	●	●	●
Impact Sensing Auto Door Unlock	●	●	●
Speed Sensing Auto Door Lock	●	●	●
Remote Keyless Entry	●	●	●
Engine Immobiliser	●	●	●
Front & Rear Parking Sensors	●	●	●
Rear View Monitor with Dynamic Guidelines	●	●	●

	EX	EV SX	PREMIUM
EXTERIOR FEATURES			
Halogen Bi-Function Projection Headlights	●	●	-
LED Bi-Function Projection Headlights	-	-	●
LED Daytime Running Lights	●	●	●
Auto Light Control	●	●	●
Front Fog Lamps	●	●	●
Rear LED Fog Lamps	●	●	●
Side Mirrors		Electrically adjustable, heated and folding with LED side indicators	
LED Rear Combination Lamps	●	●	●
Rear Spoiler with LED High-Mounted Brake Light	●	●	●
Roof Rails	●	●	●
Outside Door Handle - Chrome Coating	●	●	●
Solar Glass	●	●	●
Privacy Glass - Rear & Back Windows	-	●	●
Aeroblade Wipers	●	●	●
INTERIOR FEATURES			
Seating Configuration		5 seats	
Interior Seat Trim***		Synthetic Leather	Leather
Driver & Passenger's Seat Height Adjuster	●	●	●
Driver's Power Adjustable Memory Seat with 2-Way Power Lumbar Support	-	-	●
Heated Front Seats	-	-	●
Ventilated Front Seats	-	-	●
Height Adjustable Headrests with Driver & Passenger Up / Down & Sliding	●	●	●
Leather Steering Wheel & Gear Shift Knob	●	●	●
Steering Wheel Paddle Shifters	●	●	●
Heated Steering Wheel	-	-	●
Aluminium Sports Pedals	-	-	●
Chrome Coating Inside Door Handle	●	●	●
Interior Mood Lighting	-	-	●
60:40 Split Folding Rear Seat	●	●	●
Front Passenger's Side Seat Back Pocket	●	●	●
Driver's Side Seat Back Pocket	-	-	●
Front Overhead Console Lamp with Sunglasses Case	●	●	●
Centre Console Storage Box	●	●	●
Deluxe Door Scuff	-	-	●
High Glossy Centre Facia	●	●	●
Luggage Screen	●	●	●

	EX	EV SX	PREMIUM
COMFORT & CONVENIENCE FEATURES			
Heat Pump	-	-	●
Infotainment System	8" Touchscreen Display		10.25" Touchscreen Display
Satellite Navigation	-	●	●
6 Speakers	●	-	-
8 Speakers JBL® Premium Sound System	-	●	●
Apple CarPlay™ °	●	●	●
Android Auto™ °	●	●	●
AUX/USB Input™	●	●	●
Bluetooth Connectivity with Voice Recognition™	●	●	●
7" TFT LCD Colour Supervision Instrument Cluster	●	●	●
Multifunction Trip Computer	●	●	●
USB charging Ports		1x Front Console & 1 x Inside Centre Console	
1x 12V Power Outlet (front console)	●	●	●
Wireless Phone Charger	-	-	●
Steering Wheel Mounted Controls	●	●	●
Air Conditioning		Single Zone Climate Control	
Auto Window Defogger	●	●	●
Air Vents on Rear Centre Console	●	●	●
Rear Seat Heating Duct	●	●	●
Electrochromic Rear View Mirror (ECM)	●	●	●
Power Windows Front & Rear	●	●	●
Auto Up/Down & Safety Window		Driver & Front Passenger	
Remote Central Locking	●	●	●
Rain Sensing Front Wipers	●	●	●
Low Washer Fluid Warning	●	●	●
Smart Key with Engine Start/Stop Button	●	●	●
Sunvisors with Illuminated Vanity Mirrors	●	●	●
DIMENSIONS			
Overall Length		4,375 mm	
Overall Width		1,805 mm	
Overall Height		1,570 mm (with roof rails)	
Wheelbase		2,700 mm	
Minimum Ground Clearance		155 mm	

	EX	EV SX	PREMIUM
WEIGHT & CAPACITIES			
Kerb Weight - Minimum / Maximum		1,737 kg / 1,791 kg	
Maximum Towing Capacity - Braked & Unbraked		300 kg	
Maximum Towball Download		100 kg	
Luggage Capacity - Rear Seats Up / Down (VDA)		451 L / 1,405 L	

Information contained herein is for comparative purposes only. Specifications are correct at time of printing, and may vary to the above at any given time.

* Driving range figures standards are calculated using the World Harmonised Light Vehicle Test Procedure (WLTP). Actual results achieved will differ according to operating conditions and driving style.

° Charging times of the high voltage battery may vary according to the condition and durability of the high voltage battery, charger specifications and ambient temperature.

** Safety technologies are supplemental systems and do not replace the need for the driver to exercise care and attention.

*** Leather seats and other fixtures may comprise of genuine leather, and man-made leather-like materials or a combination thereof.

∞ Not all smartphones / devices may be compatible.

° Apple CarPlay™ requires an iPhone 5 or later. It is recommended to always update your iPhone to the latest iOS release. Use the Apple Lightning cable provided with your phone, or an Apple-certified Lightning cable. Kia cannot guarantee continued compatibility.

° Android Auto™ requires an Android phone with Android 5.0 Lollipop or higher. It is recommended to always update your phone to the latest OS release. Use the USB cable provided with your phone. Kia cannot guarantee continued compatibility.

∞ Not all mobile phones will be compatible with the vehicle's Bluetooth® and multimedia system. Kia cannot guarantee continued compatibility.

Specifications apply to 2022 (MY22) Niro models. Kia New Zealand Limited reserves the right to discontinue or change the models, features, specifications, options, designs and prices of products referred to in this brochure without incurring any liability whatsoever to any purchaser or prospective purchaser of any such products.



ECO-CONSCIOUS

SO YOU VALUE SUSTAINABLE LIVING? WE DO TOO.

That's why we take pride in rising to meet the expectations and challenges of the 21st century while making tangible contributions to the preservation of the environment and sustainable development of society.

Our environmental research centre spearheads our drive for the production of clean hybrid and fuel-cell vehicles to lead the way to eco-friendly cars for a greener tomorrow for you, your children and all of us.

From design through to recycling, we create innovative products, adhering to state-of-the-art Design for Recycling (DfR) guidelines. Even at the end of your car's life, we aim for eco-friendly return and treatment.

Operating a rigid process, we guarantee environmental protection in the treatment of harmful waste substances. These are then recycled or recovered, ensuring the highest level of environmental protection.

As you can see, what you do on a small scale with your household refuse, we at Kia do on a large scale.



5 YEAR Warranty Programme (OR UP TO 100,000 KMS)

All new Kia Passenger Vehicles come with an impressive 5-Year/100,000 km (whichever comes first) Warranty Programme covering against manufacturing or assembly defects. This warranty programme is transferable between owners and emphasises our commitment to our customers.



5 YEAR Roadside Assist

A Roadside Assistance Programme for the duration of the Warranty Period is also offered on every new Kia at no cost. In the unlikely event that your Kia has broken down, help is only a call away and trained staff will be despatched to your location. If a repair cannot be conducted on the spot, the vehicle will be towed free of charge to the nearest Kia dealer.



INCIDENT CARE

If you and your new Kia were unfortunately involved in an incident or crash that requires body repairs to your Kia, Kia Incident Care is here to help you, and is free for the first five years.

